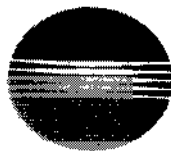


FAX PRINTER

OPERATING INSTRUCTIONS

MINOLTA FAX 5500



MINOLTA

Introduction

System requirements

To use the MINOLTA Fax Printer driver software, you need the following hardware and software:

- IBM®-compatible personal computer with an 80486 or higher processor
- Microsoft® MS®-DOS operating system version 5.0 or later
- Windows® 3.1 or Windows 95®
- Hard drive at least 1 MB of free disk space and one 3.5-inch floppy disk drive with 1.44 MB capacity
- At least 8 MB random-access memory (RAM); 16 MB recommended
- Bi-directional parallel interface cable.

*Microsoft, MS, Windows and Windows 95 are registered trademarks of Microsoft Corporation.
IBM is registered trademark of IBM Corporation.*

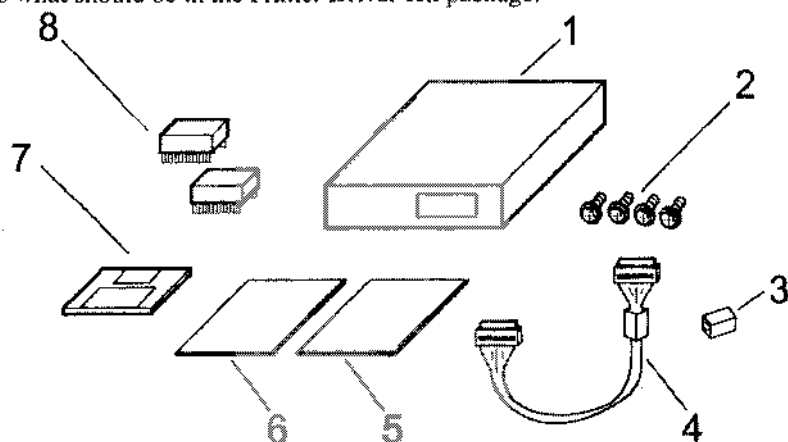
Screen shoot(s) reprinted by permission from Microsoft Corporation.

Table of contents

	Page
Introduction	i
Unpacking	1
Connecting to your computer	2
Installing the Fax Printer driver software.....	3
Installing the Fax Printer.....	3
If you use Windows 95	3
If you use Windows 3.1	5
Select the printer.....	7
Setting up the printer environment.....	9
Setting the paper size for the multipurpose tray	16
Text Print.....	18
Printing.....	21
Printing a document	21
Pausing and resuming printing	22
Canceling the printing of a document	23
Using the print manager	25
Status on your computer and printer	25
Your system	26
Communication.....	29
Your printer	32
Reset your fax machine.....	34
Your print job	35
Removing the Fax Printer driver software	37
Troubleshooting	41
Error messages.....	41
List of error messages	41
System errors	47
Appendix	49
Specification	49
Interface pin-assignment	49
Computer	49
Printer cable.....	50

Unpacking

Here's what should be in the Printer Driver Kit package:



1. Printer Driver Kit — Includes the Printer PCB (printed circuit board)
2. Four screws
3. Ferrite core
4. Connection cable
5. Fax Printer Operating Instructions
6. Optional Kit Installation Instructions
7. Fax Printer driver software floppy diskette
8. Two upgrade ROMs

Be sure to save the packing materials for reshipment.

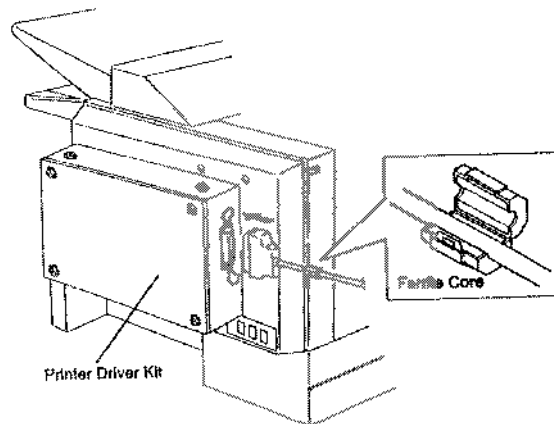
Connecting to your computer

Connecting to your computer

Note: The Printer Driver Kit must be installed by your MINOLTA authorized dealer. Please contact your MINOLTA authorized dealer.

The Printer Driver Kit provides a Centronics® parallel interface. To connect between your Printer Driver Kit and your computer, you need an extra bidirectional parallel interface cable.

1. Make sure that **both** your fax machine and your computer are turned **off**.
 2. Connect the parallel interface cable to your Printer Driver Kit's interface port.
- Note:** If your cable does not have a ferrite core already fitted, you should install the ferrite core included in your Printer Driver kit's carton box.



3. Snap the plug's wire clips onto the interface cable.
4. Connect the other end of the parallel interface cable to your computer's parallel port.

Note: Please see your computer's operating instructions if you need help.

Centronics is a registered trademark of GENICOM Corporation.

Installing the Fax Printer driver software

Important: Before you install the program, make sure that your computer meets the requirements described on page i.

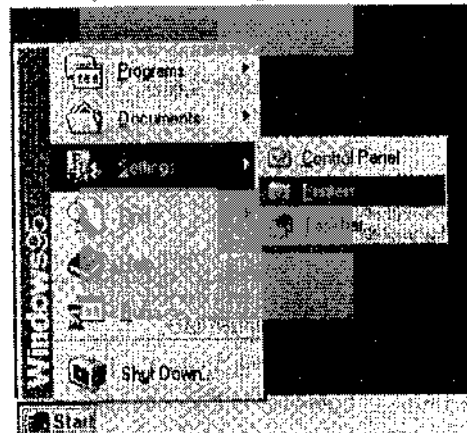
Important: The Fax Printer driver software requires Microsoft Windows 3.1 or Windows 95. If you have a Windows version earlier than 3.1, you won't be able to install or use this Fax Printer driver software.

Installing the Fax Printer

If you use Windows 95

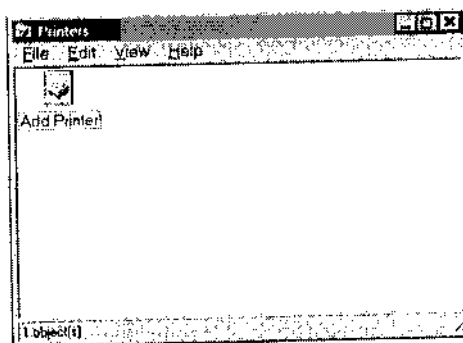
Setting up your Fax Printer driver is easy and fast, thanks to the *Add Printer Wizard*, a step-by-step printer setup program. Here's how to install the Fax Printer driver software to your computer:

1. Start Windows 95, if it is not already running.
2. Insert the Fax Printer driver software disk in a floppy disk drive.
3. Click on the **Start** button, point to **Settings**, and then click **Printers**.

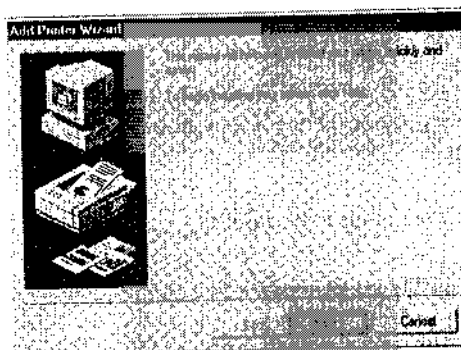


Installing the printer driver software

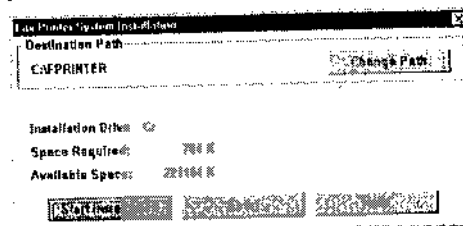
4. Double-click **Add Printer**.



5. Click **Next** to begin installing your printer.



6. While installation, you will see the **Fax Printer System Installation** window:

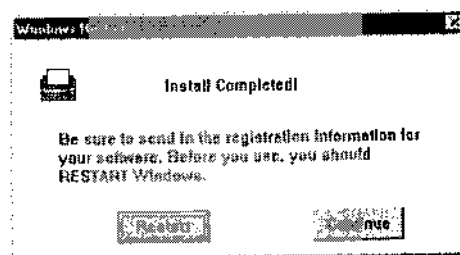


To continue installing, click **Start Installation**.

Note: If, in the future, you install other MINOLTA Fax Printer software (such as any update) on your computer, use this same path.

Installing the printer driver software

7. When installation is complete, you'll see:



To start the Fax Printer, click **Restart**.

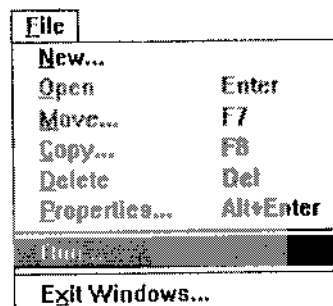
Important: If you click **Continue**, the software is installed within Windows 95 but is yet running. To start the Fax Printer, close and restart Windows 95.

8. When you finish, the icon for the Fax Printer appears in the Printers folder, and the Fax Printer Print Manager button will appear on the taskbar.

Note: To see the documents that are printing or waiting to print, and to manage printing, you must use the Fax Printer Print Manager (*page 25*).

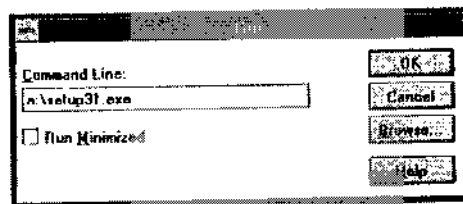
If you use Windows 3.1

1. If it is not already running, start Windows.
2. Insert the Fax Printer driver software disk in a floppy disk drive.
3. Click the **File** menu in the Program Manager, then click **Run**.

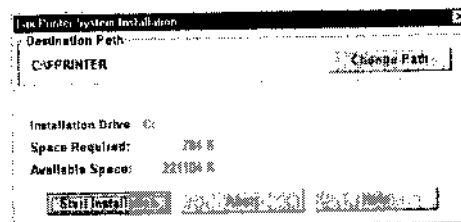


Installing the printer driver software

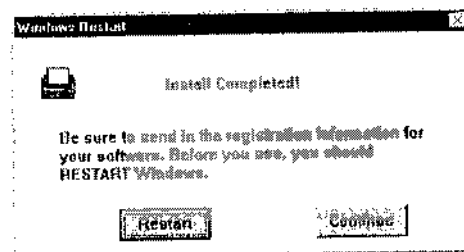
4. Type a:\setup31.exe where a: is the drive indicator, and click **OK**.



5. While installation, you will see the Fax Printer System Installation window (below). To continue, click **Start Installation**.



6. When installation is complete, you'll see:



To start the Fax Printer, click **Restart**.

Important: If you click **Continue**, the software is installed within Windows but is yet running. To start the **Fax Printer**, close and restart Windows.

7. When you finish, the Fax Printer Print Manager icon will appear at the lower edge of your screen.

Select the printer

If you've already installed any other printer drivers in your Windows setup, you should select the Fax Printer as the Default Printer in the printers window. Here's how:

1. Make the Printers windows appear.

Windows 95:

1. Click the **Start** button on the taskbar.
2. Point to **Settings**. Then click **Printers**.

Windows 3.1:

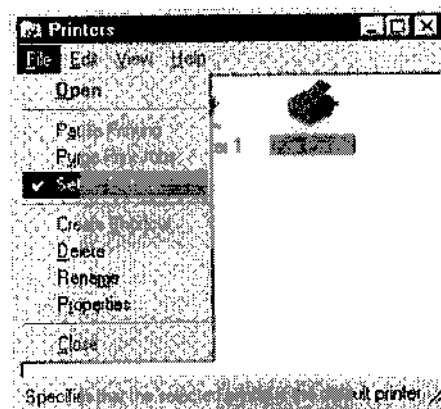
1. Double-click the Main icon in the Program Manager window.
2. Double-click the Control Panel icon in the Main group window.
3. Then double-click the Printers icon in the Control Panel window.

2. In the Printers window, click **Fax Printer**.

3. Set the Fax Printer as the default printer.

Windows 95: Click **File**. Then click **Set As Default**. (See below.)

Windows 3.1: Click **Set As Default Printer**.



4. Close the Printers window.

Windows 95: Either click **File** and then click **Close** or click the **X** button in the window's upper-right corner.

Windows 3.1: Click **Close**.

Installing the printer driver software

(This page intentionally blank.)

Setting up the printer environment

You can set the printer environment to meet your needs.
Here's how.

1. Make the Printers windows appear.

Windows 95:

1. Click the **Start** button on the taskbar.
2. Point to **Settings**. Then click **Printers**.

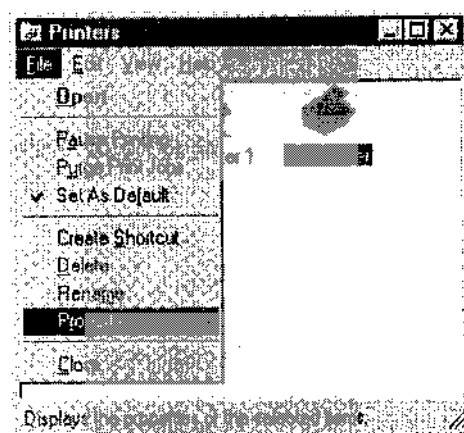
Windows 3.1:

1. Double-click the Main icon in the Program Manager window.
2. Double-click the Control Panel icon in the Main group window.
3. Then double-click the Printers icon in the Control Panel window.

2. In the Printers window, click (select) **Fax Printer**.

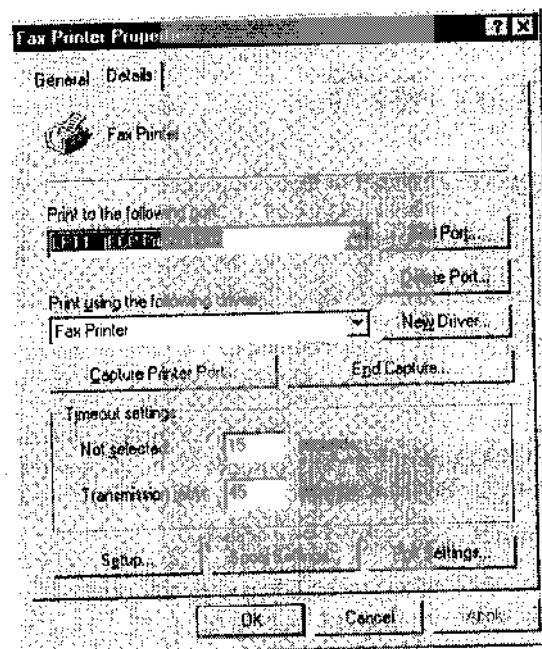
3. Windows 95: Click the **File** menu, and then click **Properties**.

Windows 3.1: Click **Setup**, then skip to step 6.



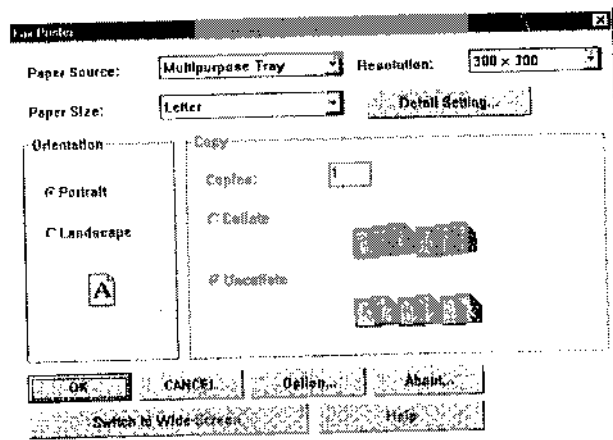
Setting up the printer environment

4. **Windows 95:** The Fax Printer Properties window will appear:



5. Click **Detail** tab, and then click **Setup....**

6. The Fax Printer Settings window will appear:



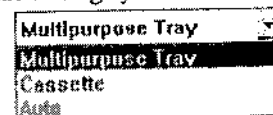
Now, you can set the following:

Setting up the printer environment

Paper source

Selects the default paper supply source. You may choose from either the multipurpose tray or the paper cassette. The Auto setting chooses the right source automatically, based on the paper size settings you have made for each source.

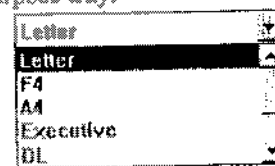
Paper Source:



Paper size

Selects the paper size in the multipurpose tray.

Paper Size:



This Fax Printer driver lets you select from among nine paper sizes:

Note: No crease or wrinkle caused by overlapping, or no moisture absorption should be allowed.

Normal paper:

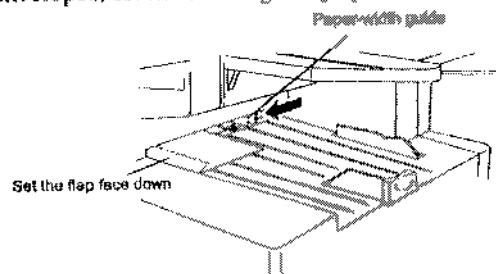
Legal	8.5 × 14 inches
Letter	8.5 × 11 inches
F4	210 × 330 mm
A4	210 × 297 mm
Executive	7.25 × 10.5 inches

Special paper:

DL	110 × 220 mm
COM 10	4.125 × 9.5 inches
Post Card	100 × 148 mm
Monarch	3.875 × 7.5 inches

Envelopes:

Your fax machine's multipurpose tray can hold up to 10 envelopes. To use envelopes, set the bluish-green flap on the front side of your machine.



Setting up the printer environment

Note: Your printer uses a heat fixing method. While the envelope passes through the printer at high temperature (392°F [200°C] for about one second) and under pressure in the fuser unit, the glue used in the envelope should not burn, melt, or cause other abnormalities.

Transparency film:

You can use the transparency film. (See "OHP Mode" page 14 for more information.) Make sure the transparency is the correct length for your fax's current printing-length setting.

Note: If using paper-backed transparency film with a strip along the edge, remove the strip before loading it. (Some printers use this strip to sense the "end" of the sheet; your machine does not use this.)

Note: Your printer uses a heat fixing method. While a transparency passes through the printer at high temperature (392°F [200°C] for about one second) and under pressure in the fuser unit, the transparency should not melt or curl excessively.

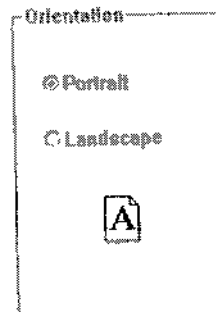
Important: If you use a different paper size from this setting, the machine won't print. So, if you load differently-sized paper into your fax machine, perform this setting again.

Important: In your computer application (such as a word processing or spreadsheet program), be sure to set the paper size for your document to the same as this setting.

Note: While selecting *reduction print*, the paper size window shows only paper size, either **B4->A4** or **A3->A4**, for the reduction print you select. If you wish to select another paper size, select the 100% reduction rate in the details setting.

Orientation

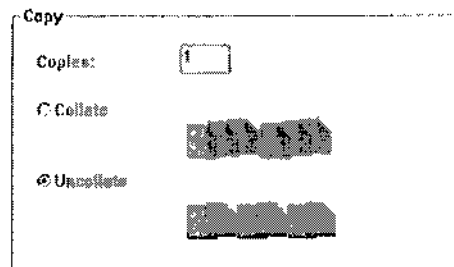
Select orientation of the page, either *portrait* (tall) or *landscape* (wide).



Setting up the printer environment

Copy

Selects the number of copies printed for each page; you can select up to 99 copies. Also, sets whether the machine will collate the printed copies.



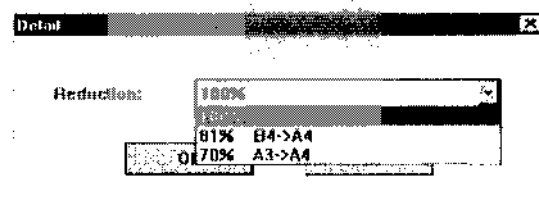
Resolution

Sets the default printing resolution to either 300 or 600 dpi.



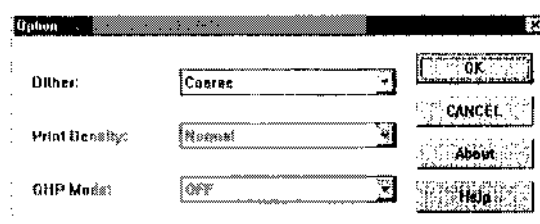
Detail Setting...

If you use A4-sized paper, you can select *reduction printing*; your reduction rate choices are 81% and 70%. This setting is not available if A4-sized paper isn't set in your fax machine.



Option...

You can set other printing functions by clicking (from the Printer Settings box) **Option...**, which brings up this dialog box:



Setting up the printer environment

Dither

Sets the quality of grayscale (halftone) printing to coarse, fine or line art.

Dither:

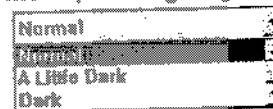


A dropdown menu with four options: Coarse, Coarse (highlighted), Fine, and Line Art.

Print Density

Sets the print density to dark, a little dark, normal, a little light, light or very light.

Print Density:



A dropdown menu with five options: Normal, A Little Light, A Little Dark, and Dark. The 'A Little Light' option is highlighted.

OHP Mode

You should set to "ON" only when using the transparency film (OHP film) in your fax machine. Otherwise, this setting should be set to "OFF".

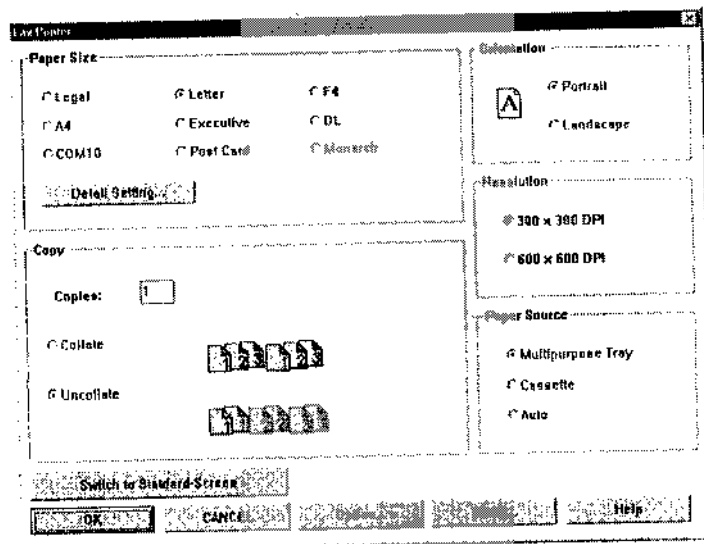
OHP Mode:



A dropdown menu with three options: OFF, OHP, and ON. The 'OFF' option is highlighted.

Switch to Wide-Screen

You can change the Printer setting window to wide screen mode (see below), which shows more settings at a time. To change to wide screen from standard mode, click **Switch to Wide-Screen**. To return to standard screen, click **Switch to Standard-Screen**.



A screenshot of the 'Fax Printer' settings window. The window is titled 'Fax Printer' and has a close button (X) in the top right corner. It contains several sections: 'Paper Size' with radio buttons for Legal, Letter (selected), F4, A4, Executive, DL, COM10, Post Card, and Monarch; a 'Detail Setting...' button; 'Copy' with a 'Copies:' field set to 1, and radio buttons for Collate (selected) and Uncollate; 'Orientation' with radio buttons for Portrait (selected) and Landscape; 'Resolution' with radio buttons for 300 x 300 DPI and 600 x 600 DPI; and 'Paper Source' with radio buttons for Multipurpose Tray (selected), Cassette, and Auto. At the bottom, there are buttons for 'Switch to Standard-Screen', 'OK', 'CANCEL', and 'Help'.

Setting up the printer environment

That concludes software settings. Now we'll talk about making a few quick settings on your fax machine itself to prepare it for printing PC documents.

Finally, if you need help while you're in the Printer Settings window:



Click **Help** for assistance. The Help window appears.

Setting up the printer environment

Setting the paper size for the multipurpose tray

The multipurpose tray can hold nine different sizes of paper for your fax machine when the machine is serving as a PC printer. All you have to do is tell your fax machine which size the tray is using.

Important: On your fax machine's display, a paper size with "P" as the last character — for example, **A4_P** — works only when you're using your fax machine as a PC printer. Such a size is **not a valid setting** for standalone (non-computer) fax receiving and copying.

Important: If you use a different paper size from this setting, the machine won't print. So, if you load differently-sized paper into your fax machine, perform this setting again.

Important: In your computer application (such as a word processing or spreadsheet program), be sure to set the paper size for your document to the same as this setting.

1. Press **►/PROGRAM, J, 0, 4, ENTER**. The LCD shows the tray's current setting:

Paper Size: Letter
Program/Enter

If the setting you see is acceptable, skip to step 3.
Otherwise, proceed to step 2.

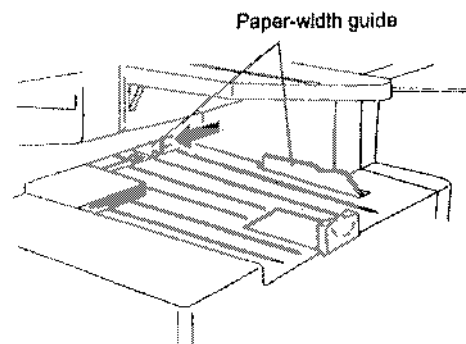
2. To change the setting, press **◀** or **►/PROGRAM** repeatedly until your chosen paper size appears. In this example, we've chosen **A4_P**.

Paper Size: A4_P
Program/Enter

3. Press **ENTER** to save the setting.

Setting up the printer environment

4. Then, adjust the multipurpose tray for the width of the paper you plan to load by sliding the paper-width guide to the appropriate slot.



Setting up the printer environment

Test Print

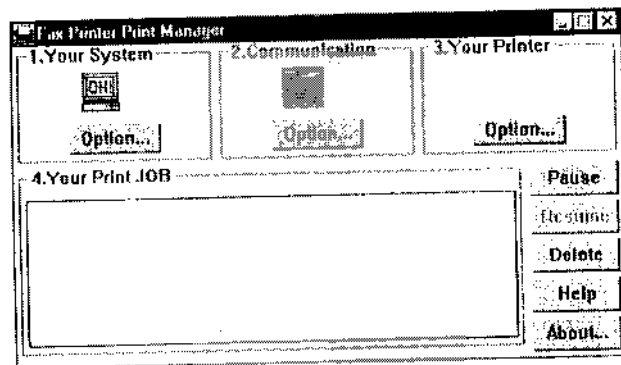
When you have finished installing the Fax Printer and setting up the printer, check everything by printing a test pattern.

1. Make sure you have turned on your fax machine's power switch and that the machine has either letter- or legal-sized paper loaded.

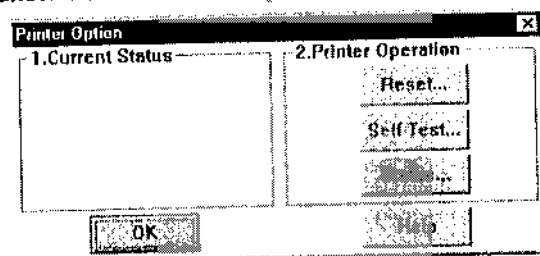
2. Open the Printer Manager window.

Windows 95: Click **Fax Printer Print Manager** on the taskbar.

Windows 3.1: Double-click the Fax Printer Print Manager icon at the lower edge of your screen.

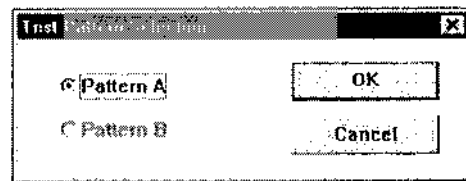


3. Click **Option** under **Your Printer** to open the **Printer Option** window.



Setting up the printer environment

4. Click **Self Test**, then the test pattern selection window will appear.



5. Click either pattern A(check pattern) or pattern B(grid pattern).

6. The test printing will begin.

Note: If an error occurred, please refer to "Troubleshooting", page 41.

Setting up the printer environment

(This page intentionally blank.)

Printing

Note: You can set how other applications run while printing is occurring:

- **Foreground** — Printing essentially takes control of Windows and your computer; it's therefore said to be "*in the foreground*."
- **Background** — While printing runs "*in the background*," other applications can run. (See "Background Printing," page 27.)

Printing a document

In this example, we'll print documents from Windows:

1. **Windows 95:** Click the **Start** button, point to **Programs**, and then click **Windows Explorer**.
Windows 3.1: Select (and, if necessary, open) the **Main** window in the Program Manager, then select the **File Manager**.

2. In the list of files, you click on the file you want to print.

3. Click the **File** menu, then click **Print**.

4. The fax machine starts to print the file.

If you have selected background printing, another application can run in the foreground.

If you have selected foreground printing, the cursor on your computer changes to a little "coffee cup" icon. While this appears, another application cannot run on your computer.

Note: If you want to print in the foreground, go to "Background printing" (see page 27), and then turn off **Background Printing** by clearing the "✓" in its checkbox.

Printing

Pausing and resuming printing

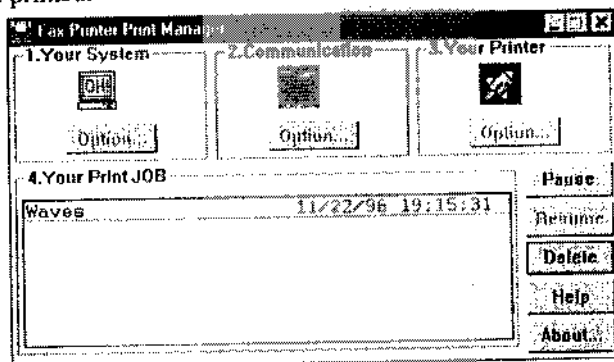
Your computer can keep track of the printing of **several** separate documents. It accomplishes this by putting them into a *queue* and printing them in the order in which it adds them to the queue every time you give print commands from your computer's application(s).

You can pause the printing of either all the documents, or just certain documents, in a *queue*. Pausing your printer stops every document **in the queue**, or pausing a single document stops only that document from printing — other documents will print.

1. **Windows 95:** Click the **Fax Printer Print Manager** button on the taskbar to open the **Fax Printer Print Manager**.

Windows 3.1: Double-click the **Fax Printer Print Manager** icon at the lower edge of your screen.

Your Print JOB shows a list of documents either printing now or waiting in the *queue* to be printed.



2. To *pause* printing, select the document you want to pause, and then click **Pause**. To *resume* printing, select the document you want to resume printing, and then click **Resume**.

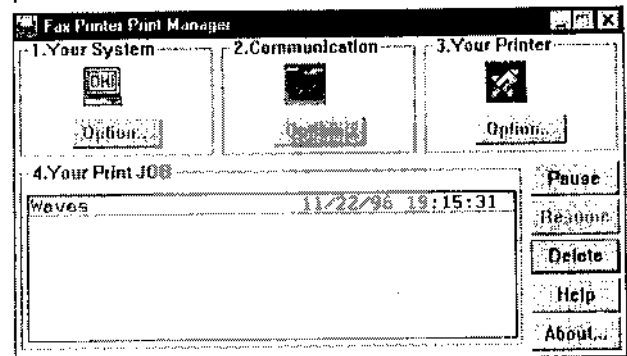
Canceling the printing of a document

You can cancel the printing of your document by deleting it from the "Your Print JOB" list.

1. **Windows 95:** Click the **Fax Printer Print Manager** button on the taskbar to open the **Fax Printer Print Manager**.

Windows 3.1: Double-click the **Fax Printer Print Manager** icon at the lower edge of your screen.

Your Print JOB shows a list of documents either printing now or waiting in the queue to be printed.



2. Select the document for which you want to cancel printing, and then click **Delete**. To resume printing, select the document you want to resume printing, and then click **Resume**.
3. In the list of documents, select the documents (or the printer) you want to cancel, and then click **Delete**. A dialog box appears, prompting you to confirm the deletion.

Printing

(This page intentionally blank.)

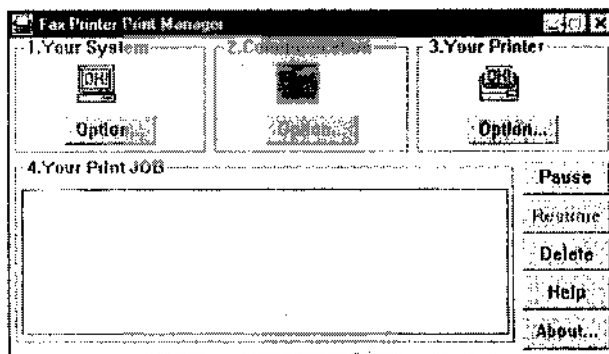
Using the print manager

Status on your computer and printer

The Fax Printer Print Manager window shows the status and environment on the computer and printer.

Windows 95: Click the **Fax Printer Print Manager** button on the taskbar to open the **Fax Printer Print Manager**.

Windows 3.1: Double-click the **Fax Printer Print Manager** icon at the lower edge of your screen.



Using the Printer Manager

-1. Your System



Your system

The **Your System** box in the Fax Printer Print Manager window shows the *current status* for the PC connected to your fax:



The PC is working properly.



An error has occurred on the PC.



The Windows Printer Manager has paused.



The printing data is being imaged.



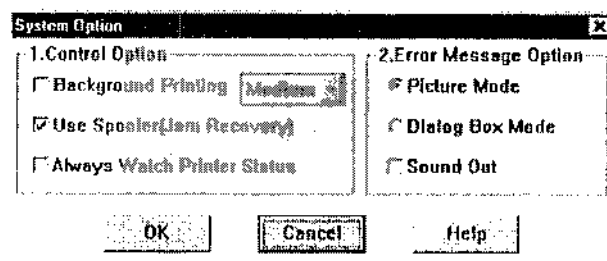
The image data is being transferred to the fax.



The Printer Manager is making settings on the fax.

Option...

Click **Option** to open the **System Option** window. You can select **Control Option** and **Error Message Option**.



For **Control Option**, your choices include:

Background Printing

This lets you continue using the PC while the fax prints your document "in the background," but the printing speed is slower.

Also, you can select the *priority* for background printing:



Your priority choices are **High**, **Medium** and **Low**. The higher the priority, the PC will work harder to finish the print job (but, of course, it therefore will allow less other work in the "foreground").

Use Spooler (Jam Recovery)

If you have this function activated, the Print Manager *spools* the print data onto the PC hard drive. When you print multiple pages, we suggest you use "Use Spooler" for higher performance. If this function is **activated** and a paper jam occurs during the printing, you can remove the jammed paper and resume the printing job from where the jam stopped everything.

Always Watch Printer Status

If this is activated, the Print Manager monitors the printer status at all times. If it is off, the Print Manager monitors the printer status only when printing.

Note: Activating **Always Watch Printer Status** may slow other PC work, particularly on slower PCs or on Windows 3.x.

Using the Printer Manager

For **Error Message Option**, your choices include:

Picture Mode

Error messages appear as an *illustration* and error statement.

Dialog Box Mode

Error messages appear as an *icon* and error statement.

Sound Out

An error beep sounds when an error occurs.

A rectangular button with a dotted border and the text "OK" in the center.

Click **OK** to save any changes you have made to the existing settings and close the **System Option** window.

A rectangular button with a dotted border and the text "CANCEL" in the center.

Click **Cancel** to close the **System Option** without saving any changes, and return to the **Fax Printer Print Manager** window.

A rectangular button with a dotted border and the text "Help" in the center.

Click **Help** if you need assistance. The **Help** window will appear.



Communication

The **Communication** box in the Fax Printer Print Manager window displays the *communication status* between your computer and the MINOLTAFAX 5500. The icon shows the status of the communication link between the PC and fax (including the connecting cable):



The link is working fine.



The computer and the fax cannot communicate with each other.



Either the printer cable is not connected or the fax is turned off.



The fax is not responding.

If there is a problem, you can click **Advice** to open the Error Message box.

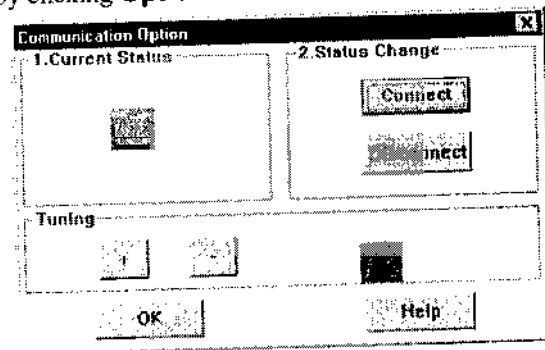


Note: To learn about clearing the error, see “Troubleshooting” (page 41).

Using the Printer Manager

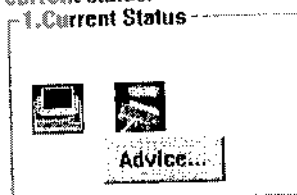


You can monitor and —if necessary — change the status of the link between your computer and fax by clicking **Option**. You'll see:



Current Status

Under Current Status, you'll see an iconic representation of the current status.



If an error occurs, click **Advice** for more information of an error.

Note: To learn about clearing the error, see "Troubleshooting" (page 41).

Status Change

You can change the communication status between your PC and fax.



When you click **Connect**, the Print Manager monitors the printer status.

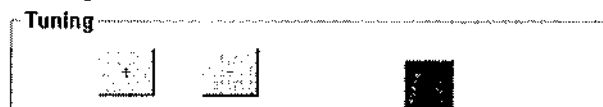
Note: When you are printing, you need not click this button because the Print Manager automatically connects to the printer.



When you click **Disconnect**, this disconnects the bi-directional communication between your computer and fax.

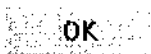
Note: If you click this button when you're not printing, this will provide a slight improvement in your PC's processing speed.

Tuning



If necessary, click + (plus) or - (minus) to optimize communication between your PC and fax. The Fax Printer driver software checks whether the fax can receive data sent at high speed from your PC, and then **adjusts internal** parameters as necessary to send data to the fax at optimum speed.

Note: Please do not use the setting "5" or "F" on an IBM PS/2.

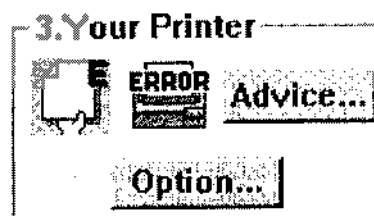


Click **OK** to close this option's window.



Click **Help** if you need assistance. The **Help** window will appear.

Using the Printer Manager



Your printer

The **Your Printer** box in the Fax Printer Print Manager window shows the messages about your printer's (fax's) status.



The fax is working normally.



An error has occurred in the fax.



The fax is warning up.



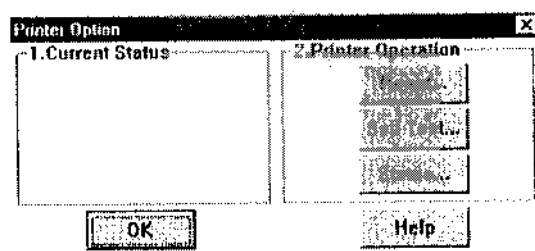
The fax is printing.

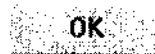


The fax is in its power-save mode.

Option...

Click the **Option** button to see the current status and perform certain printer operations.





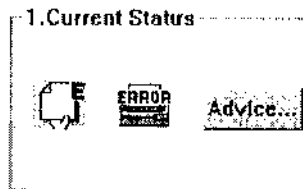
Click **OK** to close this option's window.



Click **Help** if you need assistance. The Help window will appear.

In Current Status box

You will see an iconic representation of the fax's current status as a PC printer.

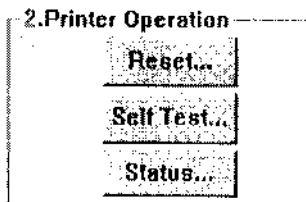


If an error has occurred, click **Advice** for more information.

Note: To learn about clearing the error, see "Troubleshooting" (page 41).

In Printer Option box

You can select three printer operations.



Press this button to reset your **Printer Driver Kit**.

Note: This button use only when "Printer response error" are not returned. If your fax machine is hang up while printing, you can reset your fax machine by the other operation. See next page.

Using the Printer Manager

Reset your fax machine

When your fax machine is not response while printing your document, you can reset your fax machine.

1. Press ►/PROGRAM, Q, ENTER.

Reset Printer Opt.
Program/Enter

2. If you wish to reset your fax machine, press **ENTER**.
If you wish to cancel this operation, press **STOP**.

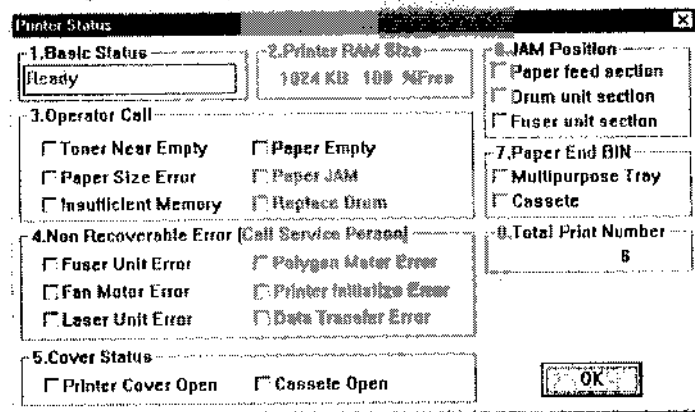
Self Test...

You may print a test pattern on your fax. Select either pattern A (a checkerboard pattern) or pattern B (a grid pattern).



Status...

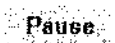
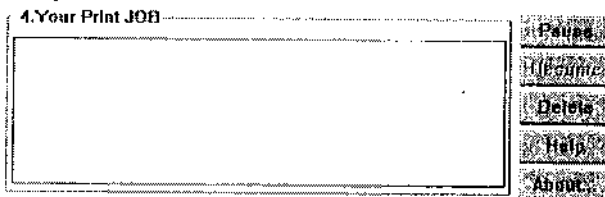
This shows the basic status (as a PC printer), RAM size, and any errors your fax has encountered during the current printing operation.



Click **OK** to close Printer Status window.

Your print job

The **Your Printer Job** box in the Fax Printer Print Manager window shows the file name *currently* being *processed* (i. e., prepared by the PC for printing) and the file names *waiting* to be processed.



Click **Pause** to pause the processing of current file.



Click **Resume** to resume the processing you paused.



Click **Delete** to delete the file **waiting** to be printed. Click the file name you want to delete before clicking **Delete**.



Click **Help** if you need assistance.

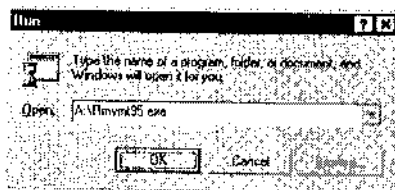
Using the Printer Manager

(This page intentionally blank.)

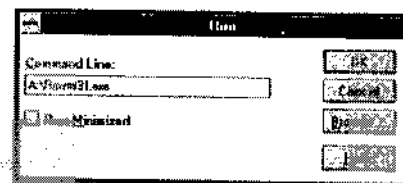
Removing the Fax Printer driver software

If it becomes necessary to remove the Fax Printer Print Manager software from your PC, here's how to do it.

1. Insert the Fax Printer driver software disk in a floppy disk drive.
2. **Windows 95:** Click the **Start** button on the taskbar, then click **Run**.
Windows 3.x: Click the **File** menu in the Program Manager, then click **Run**.
3. **Windows 95:** Type **A:\Rmvmnt95.exe** (if **A:** is the drive into which you inserted the software disk in step 1), and then click **OK**.
Windows 3.x: Type **A:\Rmvmnt31.exe** (if **A:** is the drive into which you inserted the software disk in step 1), and then click **OK**.

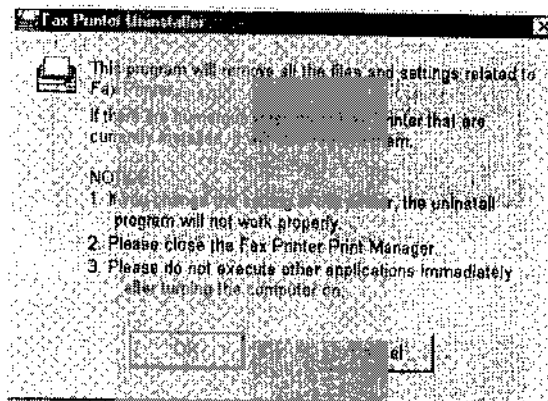


(Windows 95)



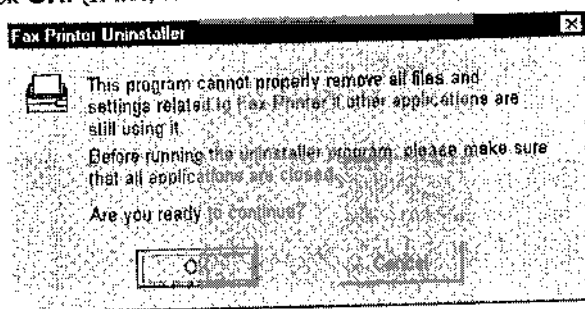
(Windows 3.x)

4. A window will appear.
To begin removing the software, click **OK**.

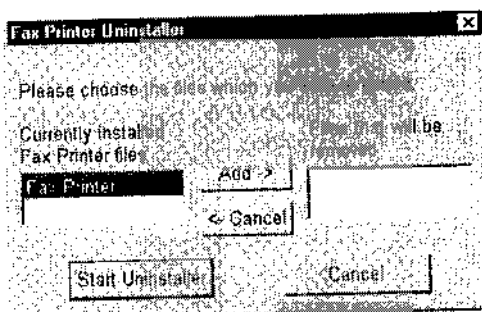


Removing the printer driver software

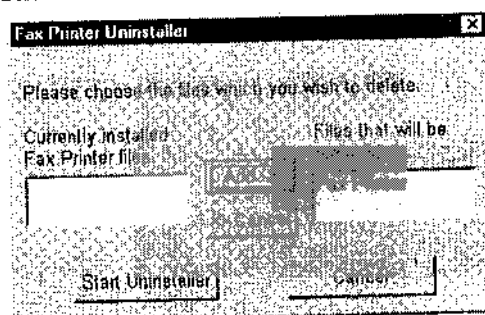
5. Next, this message is displayed. If you are ready to go ahead and remove the software, click **OK**. (If not, click **Cancel** to abort the operation.)



6. Click **Fax Printer**.

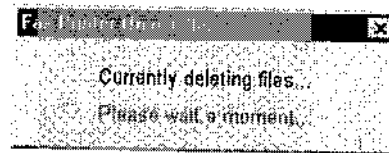


7. Click **Add** so that **Fax Printer** appears under "Files that will be removed." Then click **Start Uninstaller**.

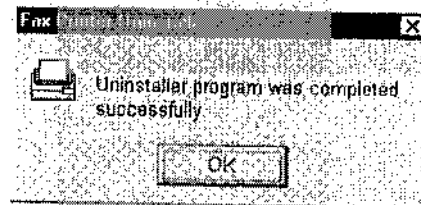


Removing the printer driver software

8. During the uninstalling, you'll see:



9. When uninstallation ends, you'll see:



Click **OK** to complete this operation.

Removing the printer driver software

(This page intentionally blank.)

Troubleshooting

Error messages

When a printer error occurs, an error icon will appear on the Communication box or Your Printer box in the Printer Manager window; also, a message box will appear.

When a printer error occurs, the Error Message box appears.

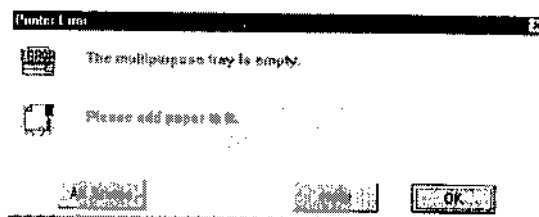
Note: You can select whether the error message appears in *picture mode* or *dialog box mode*, as shown below.

See "Error Message Option" (page 27).

Picture mode



Dialog box mode



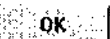
In the Fax Printer Print Manager window, an icon indicating the nature of the error appears in either the Communication box or the Your Printer box. If you need assistance understanding the error icon, click **Advice** to open the Error Message box.



Click **All Status** to show the fax's current **PC printer** status (see page 34).



Click **Help** if you need assistance. The Help window will appear.



Click **OK** to close the error message box.

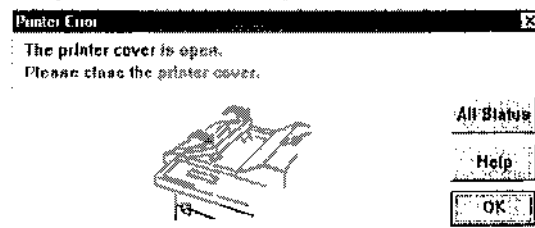
Note: Some errors will allow printing to continue; however, some stop printing and require you to print again.

Troubleshooting

List of error messages

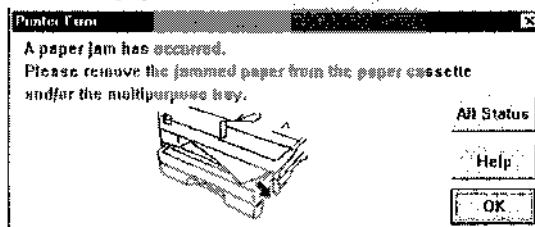
Printer cover is open

The printer cover is open. *Please close the printer cover.*



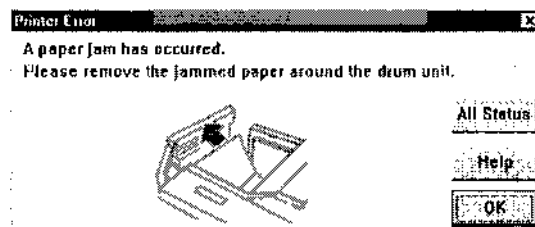
Paper jam

A paper jam has occurred at the paper cassette and/or the multipurpose tray. *Please remove the jammed paper.*



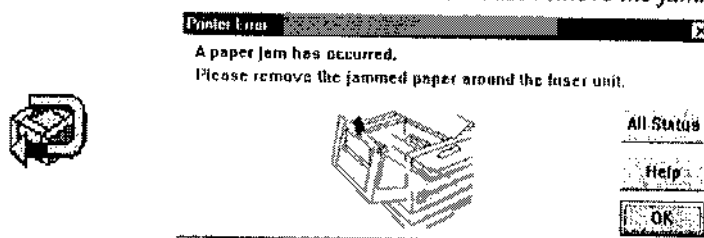
Paper jam

A paper jam has occurred at the drum unit. *Please remove the jammed paper.*



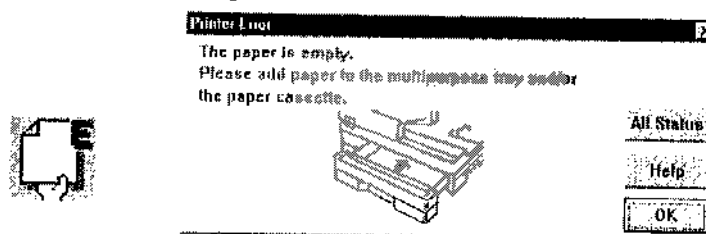
Paper jam

A paper jam has occurred at the fuser unit. *Please remove the jammed paper.*



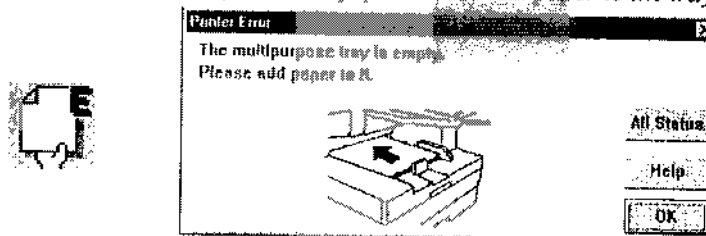
Paper is empty

Both the multipurpose tray and paper cassette are out of paper. *Please add paper to the tray and/or the paper cassette.*



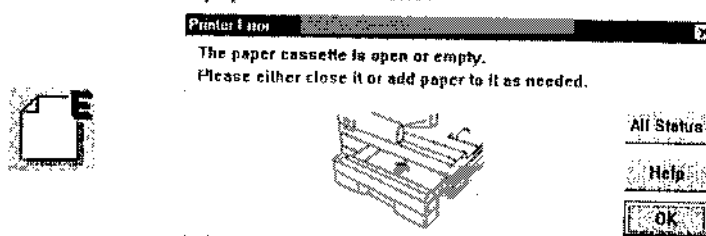
Paper is empty

The multipurpose tray is out of paper. *Please add paper to the tray.*



Paper is empty

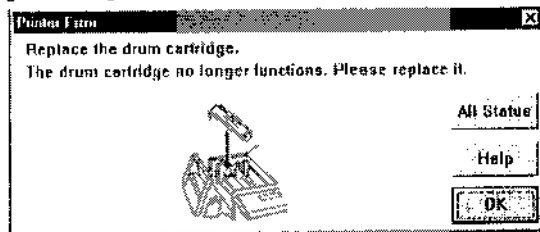
The paper cassette is either open or out of paper. *As appropriate, please either close the cassette or add paper to the cassette.*



Troubleshooting

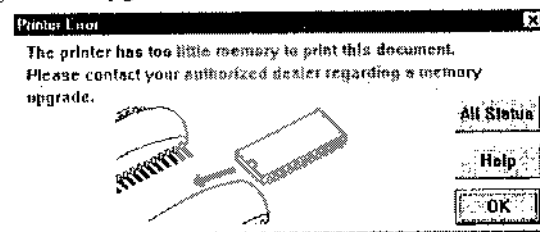
Replace drum cartridge

The drum cartridge no longer functions. *Please replace the drum cartridge.*

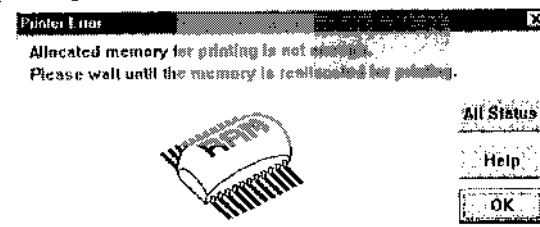


Too little memory

There is not enough RAM for printing. *Please consult your authorized MINOLTA dealer regarding a RAM upgrade.*

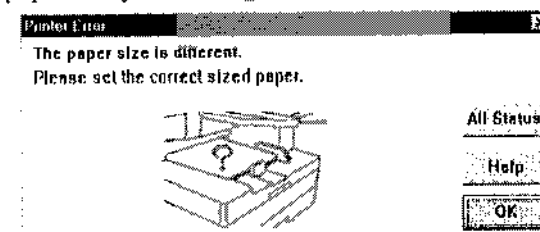


Allocated memory for printing is not enough. *Please wait until the memory is deallocated for printing.*



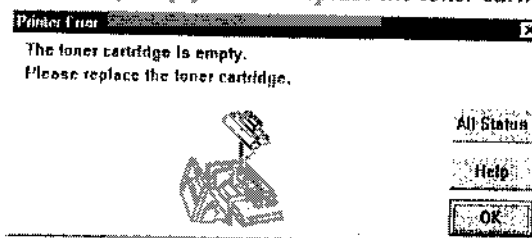
Paper size error

The size of the loaded paper is different from the current setting. *Please set your fax machine for the paper size you're using.*



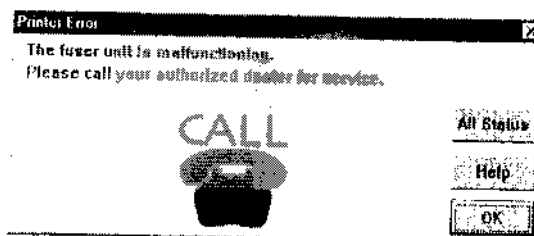
The toner cartridge is empty

The toner is empty or nearly empty. *Please replace the toner cartridge.*



Fuser unit error

The fuser unit is malfunctioning. *Please call your authorized MINOLTA dealer for service.*



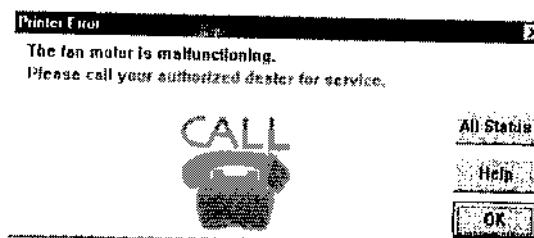
Laser error

The laser engine is malfunctioning. *Please call your authorized MINOLTA dealer for service.*



Fan motor error

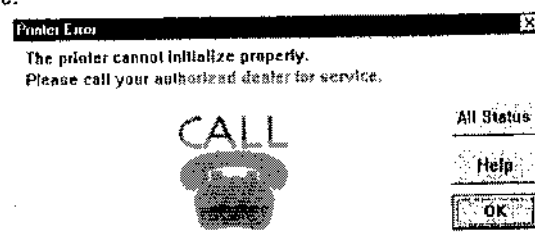
The fan motor is malfunctioning. *Please call your authorized MINOLTA dealer for service.*



Troubleshooting

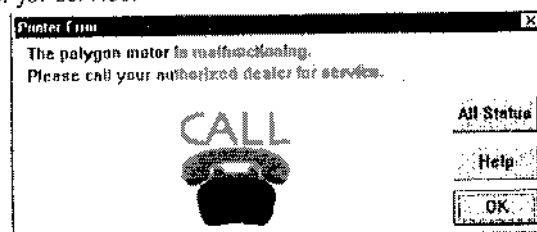
Printer initialized error

The fax machine cannot initialize properly. *Please call your authorized MINOLTA dealer for service.*



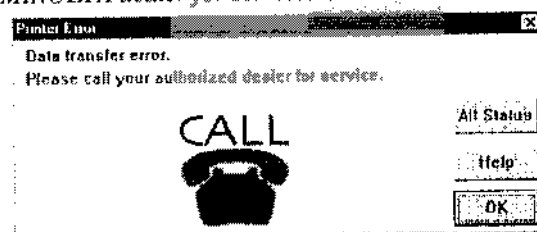
Polygon motor error

The laser engine's polygon motor is malfunctioning. *Please call your authorized MINOLTA dealer for service.*



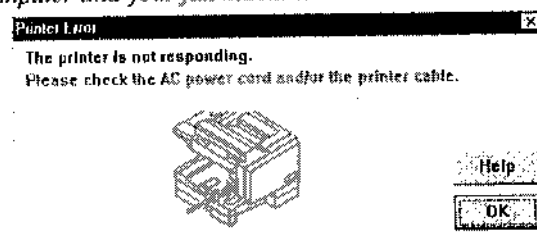
Data transfer error

Data transfer cannot occur between your computer and your fax machine. *Please call your authorized MINOLTA dealer for service.*



Printer not responding

The fax machine is not responding. *Please check its AC power cord and/or the cable between your computer and your fax machine.*



System errors



Incorrect DOS Version

This printer does not support the **DOS** version you're using.
Install MS-DOS version 3.3 or later.



Incorrect Windows Version

This printer does not support the Windows version you're using.
Install Windows 3.1 or later.



Too little computer RAM

Your PC has too little RAM. (A minimum of 4MB is required.)
Add RAM to your PC.

Note: If necessary, consult your PC's operating instructions or take the PC to an authorized service provider.



Too little virtual memory

Your PC has too little virtual memory. *In Windows, increase the virtual memory setting.*

Note: If necessary, consult the operating instructions, or Windows Help, for the **Windows** version you're using.



Free hard disk space is insufficient

Your PC's hard disk doesn't have enough free space to allow you to install this Fax Printer driver software. *Free up at least 5 MB on your PC's hard disk.*



Not running in 386 Enhanced mode

Windows isn't running in 386 Enhanced mode. *Re-set Windows to run in 386 Enhanced mode.*

Note: If necessary, consult the operating instructions, or Windows Help, for the **Windows** version you're using.



Installation Error

The Fax Printer driver software hasn't been properly installed on your PC's hard disk. *Re-install the software (see pages 3-8).*

Troubleshooting

(This page intentionally blank.)

Appendix

Specification

Interface: Centronics® parallel interface
Resolution: 300 × 300 dpi or 600 × 600 dpi
Paper cassette: 500 letter-sized sheets
Multipurpose tray: 150 sheets in legal, letter, F4, A4, Executive, DL, COM10, postcard or Monarch-sized sheets.
Safety: UL — UL1950
 FCC — Part15/Class A

Interface pin-assignment

Pin No.	I/O	Signal name	Pin No.	I/O	Signal name
1	I	/Strobe	12	O	Perror
2	I/O	Data 1	13	O	Select
3	I/O	Data 2	14	I	/AutoFd
4	I/O	Data 3	15, 33-35	-	Not Defined
5	I/O	Data 4	16	-	Logic Gnd
6	I/O	Data 5	17	-	Chassis Gnd
7	I/O	Data 6	18	O	Peripheral Logic High
8	I/O	Data 7	19, 20	-	Signal Ground
9	I/O	Data 8	31	I	/Init
10	O	/Ack	32	O	/Fault
11	O	Busy	36	I	/SelectIn

Computer

- IBM®-compatible personal computer with a 486 or higher processor
- Microsoft® MS®-DOS operating system version 5.0 or later
- Windows® 3.1 or 3.11 or Windows 95®
- Hard drive free space: 1 MB minimum
- RAM: 8 MB minimum; 16 MB recommended

Appendix

Printer cable

The parallel interface port on your Printer Driver Kit requires a 36-pin, plug type. Your computer's port may have a 25-pin, receptacle type. The following table shows the Pin assignment.

Note: If necessary, please refer to your computer's operating instructions regarding the parallel interface port for your computer.

Note: If you don't know which cable you should use, please contact your authorized MINOLTA dealer.

25-pin assignment: Computer side

Pin No.	I/O	Signal name	Pin No.	I/O	Signal name
1	O	/Strobe	10	I	/Ack
2	I/O	Data 1	11	I	Busy
3	I/O	Data 2	12	I	PError
4	I/O	Data 3	13	I	Select
5	I/O	Data 4	14	O	/AutoFd
6	I/O	Data 5	15	I	/Fault
7	I/O	Data 6	16	O	/Init
8	I/O	Data 7	17	O	/SelectIn
9	I/O	Data 8	18-25	-	Signal Ground

